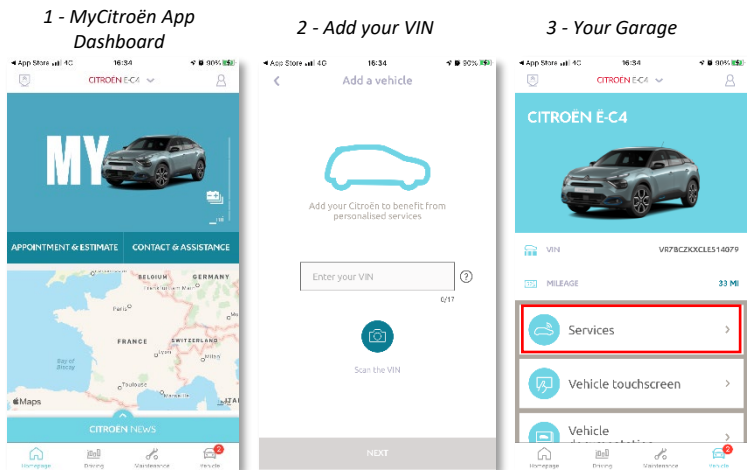


If you have a vehicle fitted with an infotainment panel, you can benefit from the CITROËN Connected Services featuring seamless Map Updates, Online Traffic & Routing and Connected Voice Command. The Connected Services are available **free of charge for the first 3 years** on new vehicles.

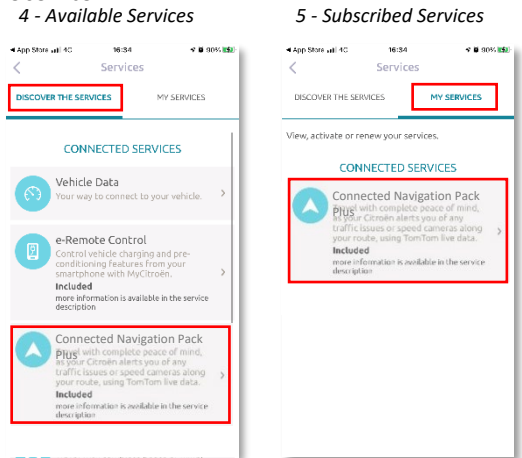
Step 1: Register to MyCitroën (renewal only*)

Visit the CITROËN Services Store <https://services-store.citroën.co.uk> and sign in, or create an account. Add your vehicle VIN number and discover the different services available in your country for your particular vehicle.



Step 2: Subscribe to the Connected Services (renewal only*)

Select the Connected Navigation Pack Plus to enjoy the connected navigation featuring always up-to-date Maps, Online Traffic & Routing and Connected Voice Recognition. Follow the registration journey to activate the service.



How to use it once activated ?

Step 3: In-Car Configuration

Once your subscription to the service is certified in your MyCitroën account, check your in-car settings to ensure they are correctly set up, allowing the required data to be shared. Your car benefits from an integrated SIM card as a standard, ensure you are parked in a free area allowing GSM network coverage (avoid underground car parks, tunnels, etc.) to perform the following steps.

Note: Depending on your vehicle the screens may vary.

Step 4: Profile Management

First, ensure that your Driver Profile is the one currently selected. To know which Profile is currently set, swipe the main screen from top to bottom. If the displayed Profile is not yours, click on it to select your personal Profile.

If you don't have any Profile yet, please create one following the **Step 5.1**.

If you don't want to create a Profile and use the Guest Session, follow the **Step 5.2**.

Note: subscriptions are usually active within an hour but can take up to 9 days to be received by the vehicle – driving in GSM covered areas will usually speed up the process.

Step 5.1: Using your personal Profile

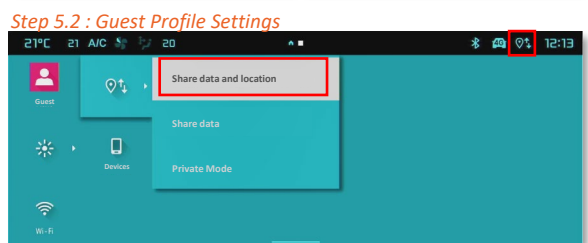
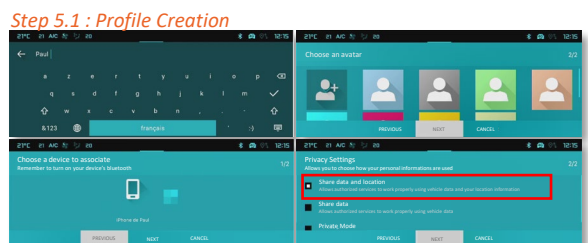
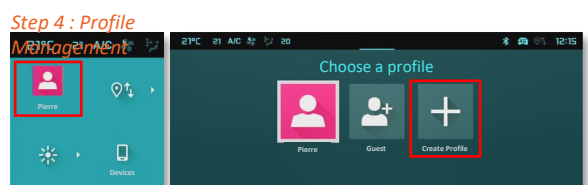
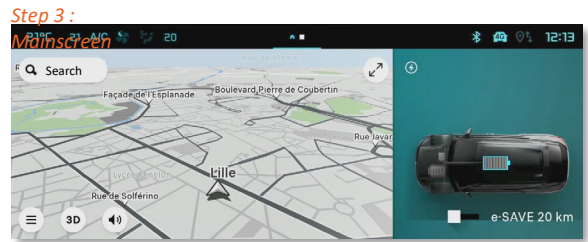
To create a Profile, click on the Profile icon and select "Create Profile". Give it a name and an avatar before linking your smartphone via Bluetooth. Finally, select 'share location and data' in the privacy panel popping up.

From now on, when entering the cabin the car will automatically recognize your smartphone and select your personal Profile with your preferences and privacy settings.

Step 5.2: Using the Guest Session

If you don't want to create a personal profile, the Guest Session remains at your disposal. The Guest Session is reset to default each time you start the engine, automatically resetting to the configuration allowing the use of connected services. In the top right hand corner, the following icon besides the clock should be highlighted. The Guest Session will also be selected if no smartphone is recognized by the car.

Note: Data sharing can be switched off any time, but Connected Services will no longer be able to operate.



Your Connected Navigation Pack Plus will now show Online Traffic & Routing and information such as parking availability & pricing, fuel prices, local weather & up-to-date Point Of Interests. Should you have any trouble in the activation of your services, please follow the Troubleshooting guidance at the bottom of the CITROËN Services Store.